



Westwood Heath Road, Coventry, CV4 8AA

**SHELDON
BOSLEY
KNIGHT**

LAND AND
PROPERTY
PROFESSIONALS

Property Description

A beautifully private, high-spec family home set behind its own gates and crafted for luxury living. If you're considering your next family move, contact us today to arrange your exclusive viewing.



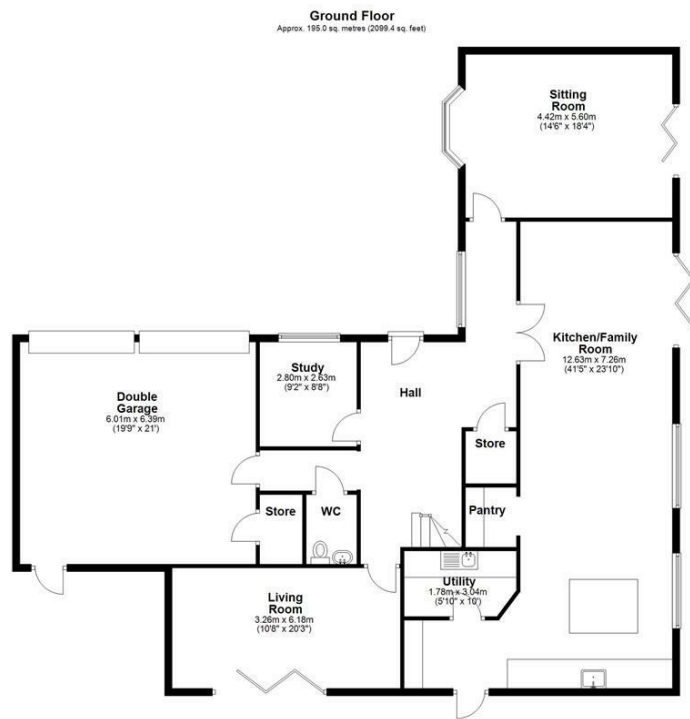


Key Features

- NEW BUILD
- 10-Year new build warranty
- Electric gated driveway
- Solid oak internal doors
- Premium appliances
- Air source heat pump
- Private driveway
- Conveniently located close to local amenities
- Bespoke kitchen
- LED lighting throughout

Asking Price
£1,350,000





Total area: approx. 326.1 sq. metres (3509.6 sq. feet)



EPC Rating -

Tenure - Freehold

Council Tax Band - New Build

Local Authority



We routinely refer clients to both our recommended legal firm and a panel of financial services providers. It is your decision whether you choose to deal with these companies. In making that decision, you should know that we receive a referral fee.

**SHELDON
BOSLEY
KNIGHT**

LAND AND
PROPERTY
PROFESSIONALS